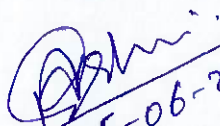


**Additional Terms and Conditions for Bidders (including Pre-Qualification requirements)**

**Supply of "JUNCTION BOX for KMMC".**

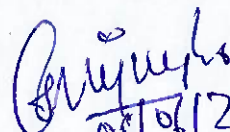
S. No	Description of requirement	Document to be attached
1	Bidder should submit a self-declaration stating that, "Offered item is same as per enquiry and there is no deviation".	Self-declaration on letterhead of firm.
2	Contract shall be awarded to only such bidder who had supplied minimum one no. of same or similar indented item to any Public Sector Undertaking, Central Govt sector/ private sector/ Indian railways working for rolling stock application.	PO and corresponding Invoice copy.

Prepared By

  
05-06-2026

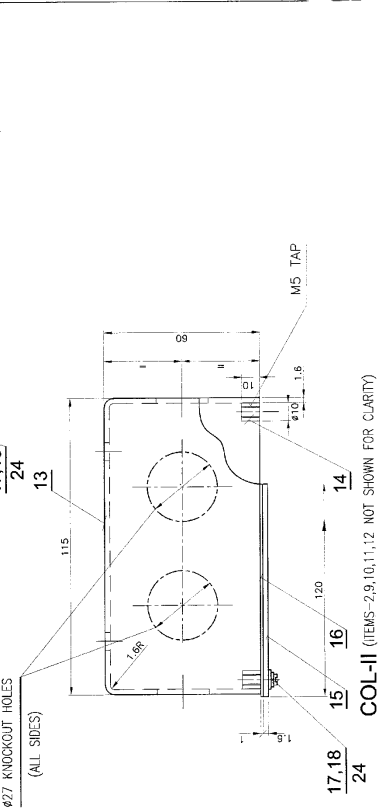
Ashwini Kumar  
Mgr (CEE)

Approved By

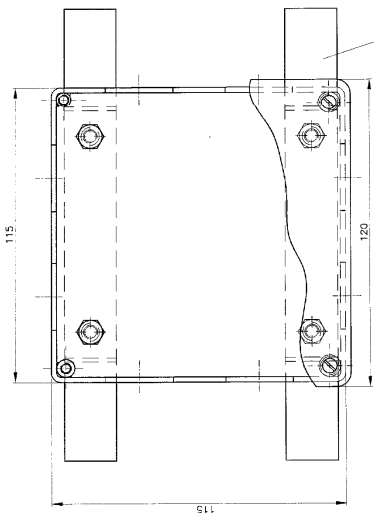
  
05/06/26

(Sanjay K. Rai)  
AGM(CEE)

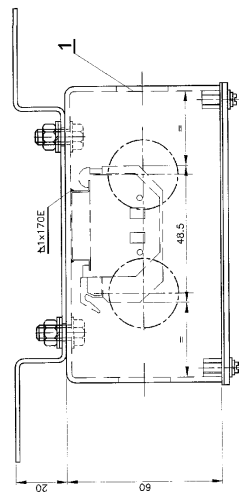
ALTERATIONS	
9	09/2013
ITEMS-23,10,11 & 12 ADDED IN COL-II AND DELETED FROM COL-I. NEWS UPDATED ACCORDINGLY.	
sd/-	DY.CEE.
SSD/D	DY.CEE.
10	09/2020
ITEMS-3 TO 6 & 8 DELETED. ITEMS-19 TO 23 ADDED.	
sd/-	DY.CEE/D
SSD/D	DY.CEE/D
11	09/2021
NOTE-1&2 REVISED ITEM-24, NOTE-4 & DIM 102 ADDED.	
sd/-	DY.CEE/D
SSD/D	DY.CEE/D
12	09/2021
NOTE-3 ADDED.	
sd/-	DY.CEE/D
SSD/D	DY.CEE/D
13	09/2021
NOTE-1&2 REVISED ITEM-24, NOTE-4 & DIM 102 ADDED.	
sd/-	DY.CEE/D
SSD/D	DY.CEE/D
14	09/2021
NOTE-3 ADDED.	
sd/-	DY.CEE/D
SSD/D	DY.CEE/D
15	09/2021
NOTE-3 ADDED.	
sd/-	DY.CEE/D
SSD/D	DY.CEE/D
16	09/2021
NOTE-3 ADDED.	
sd/-	DY.CEE/D
SSD/D	DY.CEE/D
17	09/2021
NOTE-3 ADDED.	
sd/-	DY.CEE/D
SSD/D	DY.CEE/D
18	09/2021
NOTE-3 ADDED.	
sd/-	DY.CEE/D
SSD/D	DY.CEE/D
19	09/2021
NOTE-3 ADDED.	
sd/-	DY.CEE/D
SSD/D	DY.CEE/D
20	09/2021
NOTE-3 ADDED.	
sd/-	DY.CEE/D
SSD/D	DY.CEE/D
21	09/2021
NOTE-3 ADDED.	
sd/-	DY.CEE/D
SSD/D	DY.CEE/D
22	09/2021
NOTE-3 ADDED.	
sd/-	DY.CEE/D
SSD/D	DY.CEE/D
23	09/2021
NOTE-3 ADDED.	
sd/-	DY.CEE/D
SSD/D	DY.CEE/D
24	09/2021
NOTE-3 ADDED.	
sd/-	DY.CEE/D
SSD/D	DY.CEE/D



COL-II (ITEMS-2,9,10,11,12 NOT SHOWN FOR CLARITY)

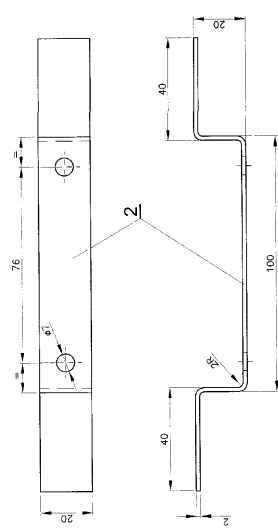


COL-I



COL-I

COL-II



COL-II

NO. OFF		DESCRIPTION & DIMENSIONS		ITEM		REF. DRGS.		MAT. SPEC.		WEIGHT/UNIT		REMARKS	
4	1	PLAIN WASHER	Ø5.5	24	5.5016-47	ME217A	13	10	10	10	10	10	10
1	1	CARRIER RAIL	7.5X35X65	23	5.5016-47	ME217A	13	10	10	10	10	10	10
2	2	ADJACENT JUMPER (2 WAY)	7.5X35X65	22	5.5016-47	ME217A	13	10	10	10	10	10	10
1	1	END PLATE	7.5X35X65	21	5.5016-47	ME217A	13	10	10	10	10	10	10
2	2	CONDUCTOR BOUND TERMINAL BOX 250X250	250X250	20	5.5016-47	ME217A	13	10	10	10	10	10	10
8	8	CONDUCTOR BOUND TERMINAL BOX 250X250	250X250	19	5.5016-47	ME217A	13	10	10	10	10	10	10

- NOTE:
- ITEM-22 SHALL BE SUPPLIED AS LOOSE ITEM.
  - JUNCTION BOX COMPLETE SHALL BE GALVANIZED AFTER CONTINUOUS WELDING OF ALL JOINTS.
  - THE TERMINAL BLOCK MARKING SHALL BE DONE BY NUMBERING FROM 01 TO 10 CHRONOLOGICALLY. NUMBER 09 & 10 SHALL BE FOR GROUNDING TERMINALS.
  - Ø7 HOLE SHALL BE PROVIDED IN ITEM-13.

4	1	PLAIN WASHER	Ø5.5	24	5.5016-47	ME217A	13	10	10	10	10	10	10
1	1	CARRIER RAIL	7.5X35X65	23	5.5016-47	ME217A	13	10	10	10	10	10	10
2	2	ADJACENT JUMPER (2 WAY)	7.5X35X65	22	5.5016-47	ME217A	13	10	10	10	10	10	10
1	1	END PLATE	7.5X35X65	21	5.5016-47	ME217A	13	10	10	10	10	10	10
2	2	CONDUCTOR BOUND TERMINAL BOX 250X250	250X250	20	5.5016-47	ME217A	13	10	10	10	10	10	10
8	8	CONDUCTOR BOUND TERMINAL BOX 250X250	250X250	19	5.5016-47	ME217A	13	10	10	10	10	10	10

NO. OFF		DESCRIPTION & DIMENSIONS		ITEM		REF. DRGS.		MAT. SPEC.		WEIGHT/UNIT		REMARKS	
4	1	PLAIN WASHER	Ø5.5	24	5.5016-47	ME217A	13	10	10	10	10	10	10
1	1	CARRIER RAIL	7.5X35X65	23	5.5016-47	ME217A	13	10	10	10	10	10	10
2	2	ADJACENT JUMPER (2 WAY)	7.5X35X65	22	5.5016-47	ME217A	13	10	10	10	10	10	10
1	1	END PLATE	7.5X35X65	21	5.5016-47	ME217A	13	10	10	10	10	10	10
2	2	CONDUCTOR BOUND TERMINAL BOX 250X250	250X250	20	5.5016-47	ME217A	13	10	10	10	10	10	10
8	8	CONDUCTOR BOUND TERMINAL BOX 250X250	250X250	19	5.5016-47	ME217A	13	10	10	10	10	10	10

NO. OFF		DESCRIPTION & DIMENSIONS		ITEM		REF. DRGS.		MAT. SPEC.		WEIGHT/UNIT		REMARKS	
4	1	PLAIN WASHER	Ø5.5	24	5.5016-47	ME217A	13	10	10	10	10	10	10
1	1	CARRIER RAIL	7.5X35X65	23	5.5016-47	ME217A	13	10	10	10	10	10	10
2	2	ADJACENT JUMPER (2 WAY)	7.5X35X65	22	5.5016-47	ME217A	13	10	10	10	10	10	10
1	1	END PLATE	7.5X35X65	21	5.5016-47	ME217A	13	10	10	10	10	10	10
2	2	CONDUCTOR BOUND TERMINAL BOX 250X250	250X250	20	5.5016-47	ME217A	13	10	10	10	10	10	10
8	8	CONDUCTOR BOUND TERMINAL BOX 250X250	250X250	19	5.5016-47	ME217A	13	10	10	10	10	10	10

NO. OFF		DESCRIPTION & DIMENSIONS		ITEM		REF. DRGS.		MAT. SPEC.		WEIGHT/UNIT		REMARKS	
4	1	PLAIN WASHER	Ø5.5	24	5.5016-47	ME217A	13	10	10	10	10	10	10
1	1	CARRIER RAIL	7.5X35X65	23	5.5016-47	ME217A	13	10	10	10	10	10	10
2	2	ADJACENT JUMPER (2 WAY)	7.5X35X65	22	5.5016-47	ME217A	13	10	10	10	10	10	10
1	1	END PLATE	7.5X35X65	21	5.5016-47	ME217A	13	10	10	10	10	10	10
2	2	CONDUCTOR BOUND TERMINAL BOX 250X250	250X250	20	5.5016-47	ME217A	13	10	10	10	10	10	10
8	8	CONDUCTOR BOUND TERMINAL BOX 250X250	250X250	19	5.5016-47	ME217A	13	10	10	10	10	10	10

NO. OFF		DESCRIPTION & DIMENSIONS		ITEM		REF. DRGS.		MAT. SPEC.		WEIGHT/UNIT		REMARKS	
4	1	PLAIN WASHER	Ø5.5	24	5.5016-47	ME217A	13	10	10	10	10	10	10
1	1	CARRIER RAIL	7.5X35X65	23	5.5016-47	ME217A	13	10	10	10	10	10	10
2	2	ADJACENT JUMPER (2 WAY)	7.5X35X65	22	5.5016-47	ME217A	13	10	10	10	10	10	10
1	1	END PLATE	7.5X35X65	21	5.5016-47	ME217A	13	10	10	10	10	10	10
2	2	CONDUCTOR BOUND TERMINAL BOX 250X250	250X250	20	5.5016-47	ME217A	13	10	10	10	10	10	10
8	8	CONDUCTOR BOUND TERMINAL BOX 250X250	250X250	19	5.5016-47	ME217A	13	10	10	10	10	10	10

NO. OFF		DESCRIPTION & DIMENSIONS		ITEM		REF. DRGS.		MAT. SPEC.		WEIGHT/UNIT		REMARKS	
4	1	PLAIN WASHER	Ø5.5	24	5.5016-47	ME217A	13	10	10	10	10	10	10
1	1	CARRIER RAIL	7.5X35X65	23	5.5016-47	ME217A	13	10	10	10	10	10	10
2	2	ADJACENT JUMPER (2 WAY)	7.5X35X65	22	5.5016-47	ME217A	13	10	10	10	10	10	10
1	1	END PLATE	7.5X35X65	21	5.5016-47	ME217A	13	10	10	10	10	10	10
2	2	CONDUCTOR BOUND TERMINAL BOX 250X250	250X250	20	5.5016-47	ME217A	13	10	10	10	10	10	10
8	8	CONDUCTOR BOUND TERMINAL BOX 250X250	250X250	19	5.5016-47	ME217A	13	10	10	10	10	10	10

NO. OFF		DESCRIPTION & DIMENSIONS		ITEM		REF. DRGS.		MAT. SPEC.		WEIGHT/UNIT		REMARKS	
4	1	PLAIN WASHER	Ø5.5	24	5.5016-47	ME217A	13	10	10	10	10	10	10
1	1	CARRIER RAIL	7.5X35X65	23	5.5016-47	ME217A	13	10	10	10	10	10	10
2	2	ADJACENT JUMPER (2 WAY)	7.5X35X65	22	5.5016-47	ME217A	13	10	10	10	10	10	10
1	1	END PLATE	7.5X35X65	21	5.5016-47	ME217A	13	10	10	10	10	10	10
2	2	CONDUCTOR BOUND TERMINAL BOX 250X250	250X250	20	5.5016-47	ME217A	13	10	10	10	10	10	10
8	8	CONDUCTOR BOUND TERMINAL BOX 250X250	250X250	19	5.5016-47	ME217A	13	10	10	10	10	10	10

NO. OFF		DESCRIPTION & DIMENSIONS		ITEM		REF. DRGS.		MAT. SPEC.		WEIGHT/UNIT		REMARKS	
4	1	PLAIN WASHER	Ø5.5	24	5.5016-47	ME217A	13	10	10	10	10	10	10
1	1	CARRIER RAIL	7.5X35X65	23	5.5016-47	ME217A	13	10	10	10	10	10	10
2	2	ADJACENT JUMPER (2 WAY)	7.5X35X65	22	5.5016-47	ME217A	13	10	10	10	10	10	10
1	1	END PLATE	7.5X35X65	21	5.5016-47	ME217A	13	10	10	10	10	10	10
2	2	CONDUCTOR BOUND TERMINAL BOX 250X250	250X250	20	5.5016-47	ME217A	13	10	10	10	10	10	10
8	8	CONDUCTOR BOUND TERMINAL BOX 250X250	250X250	19	5.5016-47	ME217A	13	10	10	10	10	10	10

NO. OFF		DESCRIPTION & DIMENSIONS		ITEM		REF. DRGS.		MAT. SPEC.		WEIGHT/UNIT		REMARKS	
4	1	PLAIN WASHER	Ø5.5	24	5.5016-47	ME217A	13	10	10	10	10	10	10
1	1	CARRIER RAIL	7.5X35X65	23	5.5016-47	ME217A	13	10	10	10	10	10	10
2	2	ADJACENT JUMPER (2 WAY)	7.5X35X65	22	5.5016-47	ME217A	13	10	10	10	10	10	10
1	1	END PLATE	7.5X35X65	21	5.5016-47	ME217A	13	10	10	10	10	10	10
2	2	CONDUCTOR BOUND TERMINAL BOX 250X250	250X250	20	5.5016-47	ME217A	13	10	10	10	10	10	10
8	8	CONDUCTOR BOUND TERMINAL BOX 250X250	250X250	19	5.5016-47	ME217A	13	10	10	10	10	10	10

IV	III	II	I	GROUP -	7-1
JUNCTION BOX COMPLETE					
FOR MRVC/BT COACHES (PROTO TYPE)					
		PER ASSY			
		PER ASSY			
CAD FILE: ED-CAD-573-7-1-035-S000.DWG					
DATA CODE No.			INDIAN RAILWAY		SHEET
573			STANDARDS		1 of 1